

TC-X

Exploded View Drawing and Parts List

Model: **CF-X25SWFR**

Model Number: **1H00425MP**

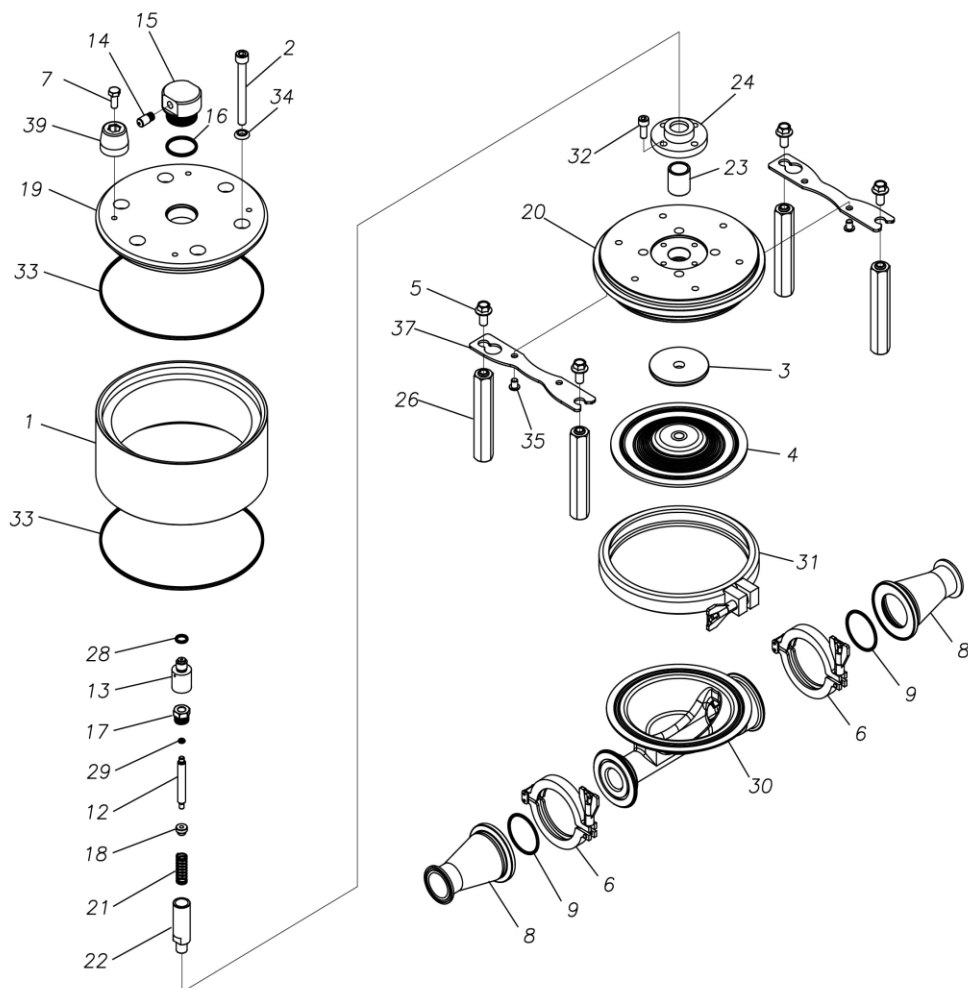
The part list and exploded view drawing as attached below indicate the full list of parts for the above mentioned pump model.

When ordering parts take care to select the correct model pump and required parts. Also be aware that models may change over time as improvements are made so cross-referencing the pumps serial number assembly date and service code are also recommended.

If you require specific spare parts you can also use this form to place your order.

For more information specific to your pump please refer to the pumps Service Book and Operation Manual available separately.

Please contact your Pump Distributor directly for more information.



■ Parts List

CF-X25SWFR

1H00425MP

Ref.No.	Parts No.	Description	Parts Component	Remark
1	1H30182MM	AIR CHAMBER	1	
2	9B3221095	BOLT M10 × 95	6	
3	1H30164TM	CENTER DISK	1	
4	1H20107TB	DIAPHRAGM	1	
5	9B2211020	BOLT M10 × 20	4	
6	1H30168MB	CLAMP	2	
7	9B1210820	BOLT M8 × 20	4	
8	1H20109SM	FLANGE	2	
9	9S1TG0050	O RING G-50	2	
12	1H30119MM	VALVE	1	
13	1H30120MM	VALVE SEAT	1	
14	1D90004MP	SILENCER	1	
15	1H10040MP	VALVE ASSEMBLY	1	
16	9S1BG0035	O RING G-35	1	
17	1D30055MM	STOPPER CENTER ROD	1	
18	1D30056MM	STOPPER VALVE	1	
19	1H30183MM	AIR CHAMBAER UPPER	1	
20	1H30184MM	AIRCHAMBER LOWER	1	
21	1D30059MM	SPRING	1	
22	1H30177TM	CENTER ROD	1	
23	1D30060MM	BEARING CENTER ROD	1	
24	1H30124MM	CASE BEARING	1	
26	1H30180MM	STUD	4	
28	9S1BP0012	O RING P-12	1	

Ref.No.	Parts No.	Description	Parts Component	Remark
29	9S1B90008	O RING P-4	1	
30	1H20108SM	OUT CHAMBER	1	
31	1H30169MB	CLAMP	1	
32	9B3210820	BOLT M8 × 20	4	
33	9S1BM0205	O RING GS-205	2	
34	1H30127MB	SEAL WASHER	6	
35	9B9210800	BOLT M8 × 10	4	
37	1H30181MM	BASE	2	
39	1E30070HB	RUBBER FEET	4	